

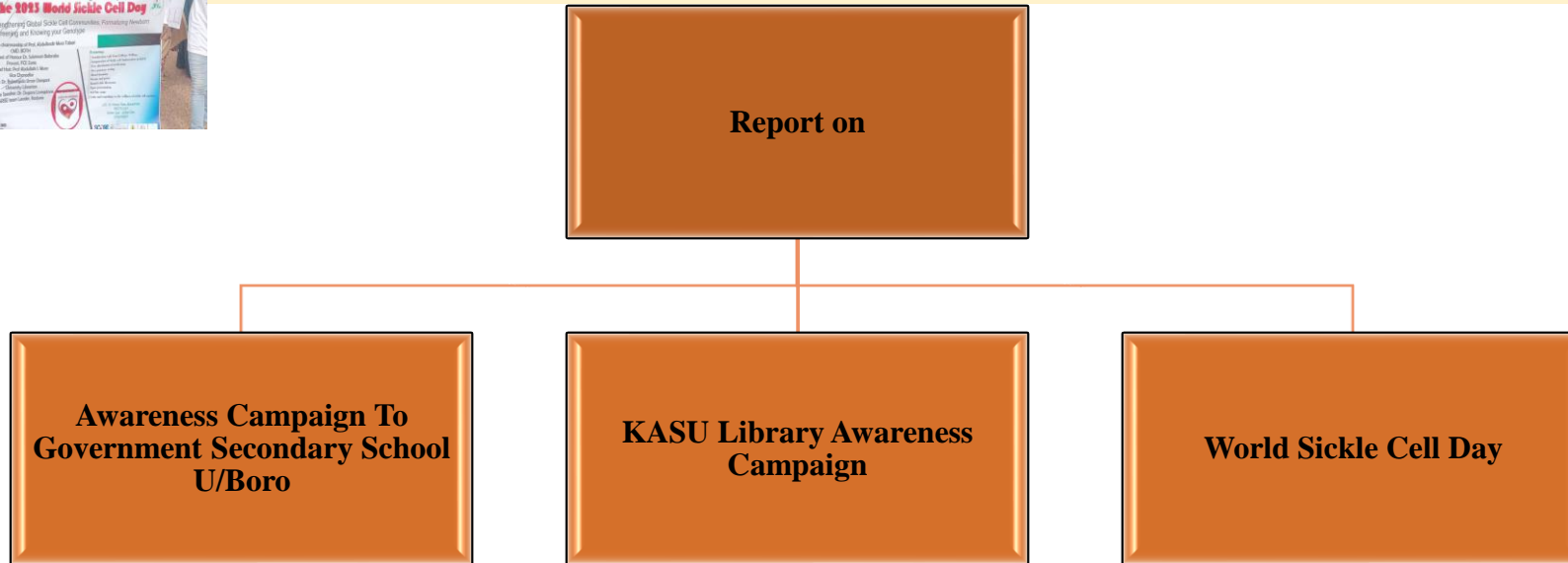
ARISE: SCHOOL PROJECT REPORT

JULY, 2023



ARISE

African Research And Innovative
Initiative For Sickle Cell Education



BY
Nasara, Larai and
Esther



This project has received funding from the European Union's Horizon 2020 research and innovation programme under the Marie Skłodowska-Curie grant agreement No. 824021





Members:

Nasara,

Larai

Esther

Volunteers are

- Lami Daniels
- Halima Usman
- Cyril Tanimu Yohanna
- Lilian Elisha
- Joseph Nyela Gimba
- Ozongbe Joel
- Salome Maikano Magaji
- Debora Barde
- Abdulaziz



**AWARENESS
CAMPAIGN TO
GOVERNMENT
SECONDARY
SCHOOL U/BORO
ON FRIDAY, 1st
FEBRUARY 2023**

1

PREAMBLE:

The team met with the Principal of the School to brief her on the ARISE School Program and the expected long term impact of the training and thereafter met with the students at their break time.

2

ATTENDANCE: The following members were present at the:

1. Nasara Danmaida Ifere
2. Larai Diana Gwani
3. Cyril Yohanna Tanimu
4. Lami Gillian Daniel
5. Lilian Zenom Ishaya
6. Halima Usman
7. Habila Isah

6

Team Lead responded and promised to submit a copy of the Sickle Cell Disease School policy for further study.

5

The Principal expressed gratitude for the training

4

Interactive Session:

The training was interactive with students asking questions and giving quality feedbacks.

The interactive session ended with lots of satisfaction from the attendees

3

TRAINING:

About 400 students were present

They were given Flyers and Information leaflets

a demonstration on normal cell and sickle cell was done





KASU Library Awareness Campaign

Date: 25th May, 2023

Venue: KASU Library e-Learning Centre

Aim: To create awareness in KASU Library

Objectives:

- To provide information about sickle cell disease to KASU Community.
- To provide participants with an overview of ARISE Project.
- To outline the role KASU Library play in ARISE.

Outcomes:

- At the end of the program, KASU Library Staff should get an insight into SCD, its causes and preventive methods.
- At the end of the program, Participants should understand better what the ARISE Project is about.
- At the end of the program, Participants should know the role KASU Library play in ARISE.

Target Audience: Library management, library staff, students, KASU lecturers, KASU community, community volunteers, and ARISE team.

Methodology: Physical and virtual meeting
Number of Participants: 31
Duration: 2 hours





**REPORT ON WORLD
SICKLE CELL DAY JUNE
19th, 2023**

**Venue: 1000 seater capacity
Lecture Theatre**

**Aim: to educate the public
about the disease, promote
early diagnosis and treatment,
and advocate for better
support and care for those
affected by the disease**

Collaborators include

- Kaduna State University Library,
- Barau Dikko Teaching Hospital (BDTH),
- Kaduna State house of Assemble
- Great Panaf International School
- KASU Medical Centre
- College of medicine and allied Sciences,
- Faculty of Pharmacology
- Department of English and Drama

Partners include

Xcene Research
DNA Laboratory Public Private
Partner – (PPP) BDTH
DNA Laboratory
Sir Ahmadu Bello Memorial
Foundation
Federal College of Education, Zaria

Activities

sensitization walk,
inauguration of over 200 sickle
cell ambassadors in KASU
free distribution of medication
for warriors,
free genotype testing of over
100 samples,
blood donation about 17,
drama, and poem presentations,
and more.

The keynote speech was delivered by Dr. Livingstone Dogara the Team Lead ARISE Kaduna State about the global burden of sickle cell disease, the latest research findings, and the need for collaborative efforts to improve the lives of those living with the disease

The lead by Dr. Ifeoma Ijie, a sickle cell specialist and Member ARISE on the challenges of managing sickle cell disease in resource-limited settings and the importance of early diagnosis and treatment.





Other Reports

- Blood drive: 17 donations was done and it was sent to BDTH. We have consumables left with the team and will be used for other community outreach to solicit for blood (more report from Dr. Ifeoma and Anty Mary)
- Medication: over 25 people living with SCD got free medication and we had a left over of report from the director KASU centre
- Genotype test, over 100 samples were collected the res





Appreciation: We sincerely thank the following persons and institutions for their enormous support

The Vice chancellor, KASU

- Dr. Dogara Livinstone,
- Great Panaf School
- Community Volunteers (I can not call names)
- KSHAssembly
- The University Librarian
- Dr. Ifeoma Ijei'Enesi for always presenting
- The Lab Scientist, Data collection, here everyone, All

Conclusion

The three activities were very successful and those in this meeting can testify as it helped to raise awareness about sickle cell disease and provided support and care for sickle cell warriors

Future plans are

Awareness Training of Sickle Ambassadors in KASU

Community Outreach within Kaduna

More schools Visits

Faculties and departments outreach in KASU

E-library collections

Documentary Hour in the library

Visit to KASU FM



Thank you for your Attention

Thank you for your Attention

