



Health Information Service (Sickle Cell Disease)



ARISE

African Research And Innovative
Initiative For Sickle Cell Education

<https://www.ariseinitiative.org/arise-project/>

Esther's secondment experience

<https://www.ariseinitiative.org/blog/esthers-secondment-experience/>

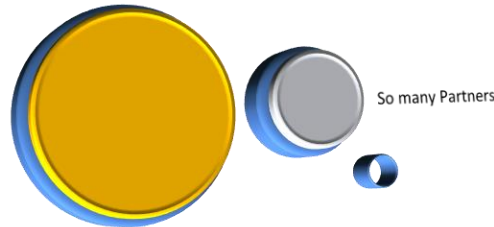
The Role of KASU library in ARISE Project

This project has received funding from the European Union's Horizon 2020 research and innovation programme under the Marie Skłodowska-Curie grant agreement No. 824021





<https://www.ariseinitiative.org/arise-project/project-partners/>



INTRODUCTION

ARISE means African Research and Innovative Initiative for Sickle Cell Education

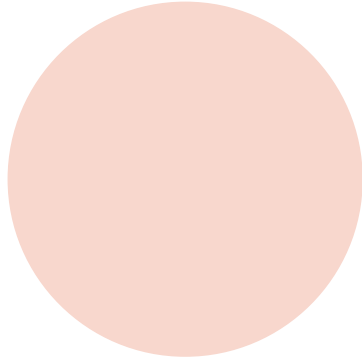
ARISE engage in collaborative research and training initiative aiming at building different educational initiative to promote foster scientific cooperation and build research capacity.

ARISE oversees Newborn screening, early diagnosis and appropriate treatments to improve patient's quality of life.

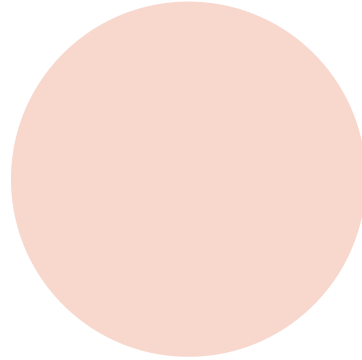
ARISE has an international and multidisciplinary staff exchange programme from 23 partners in 8 Eu/non-Eu countries.



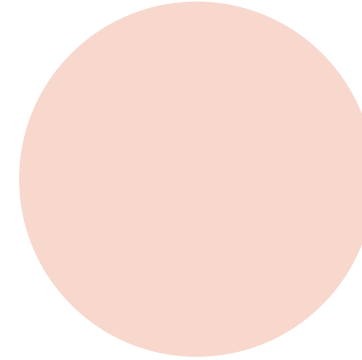
The ARISE Project focuses on



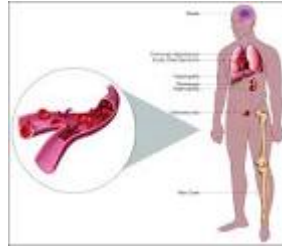
Research Capacity for Service Improvement is a research project funded by the EU in the framework of the H2020-MSCA-RISE-2018 programme. Led by Fondazione Gianni Benzi and Guys and St Thomas' NHS Foundation Trust in London, the project involves institutions in EU (Italy, France, UK and Cyprus) e non-EU (Nigeria, Lebanon, Kenya and USA) countries.



Creating an interagency and multidisciplinary staff exchange programme between researchers, early start investigators and other relevant staff members of the partners institutions to share and spread the best practices in Newborn Screening, diagnosis and treatment of SCD, leading to improvement in overall disease outcome.



SCD Prevalence; genotypes and phenotypes; existing “best practices” for Newborn Screening and early diagnosis; engagement with patients, families and policy makers to determine barriers to Newborn Screening; lab diagnosis and quality assurance systems for population screening; treatment protocols for the management of complications and transition from paediatric to adult care, health promotion strategies and nutrition.



ARISE Project Achievements

35 Completed
Secondments

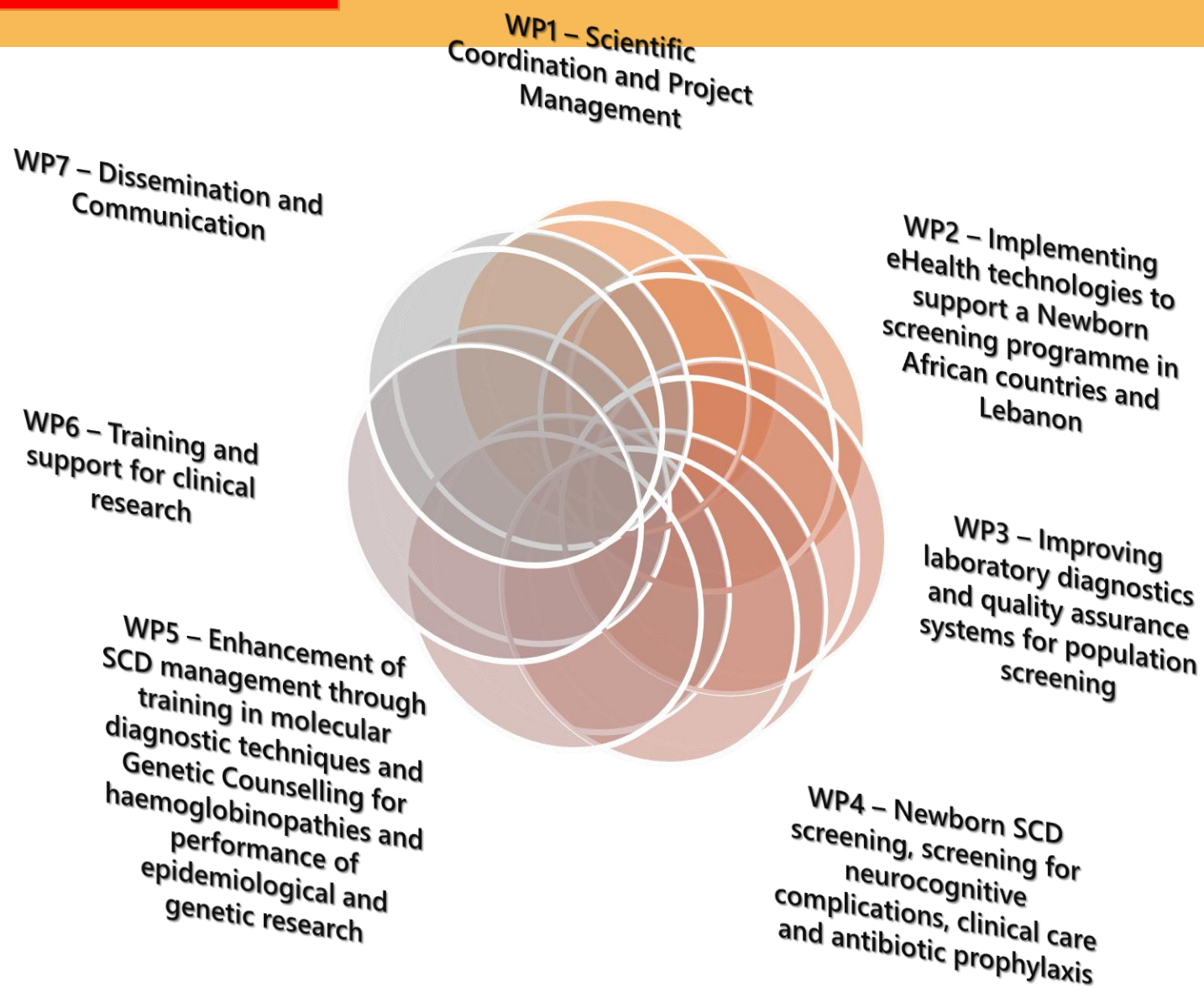
82 Virtual Training
Programme
Lessons hours

41 Virtual Teaching
Programme
Lectures

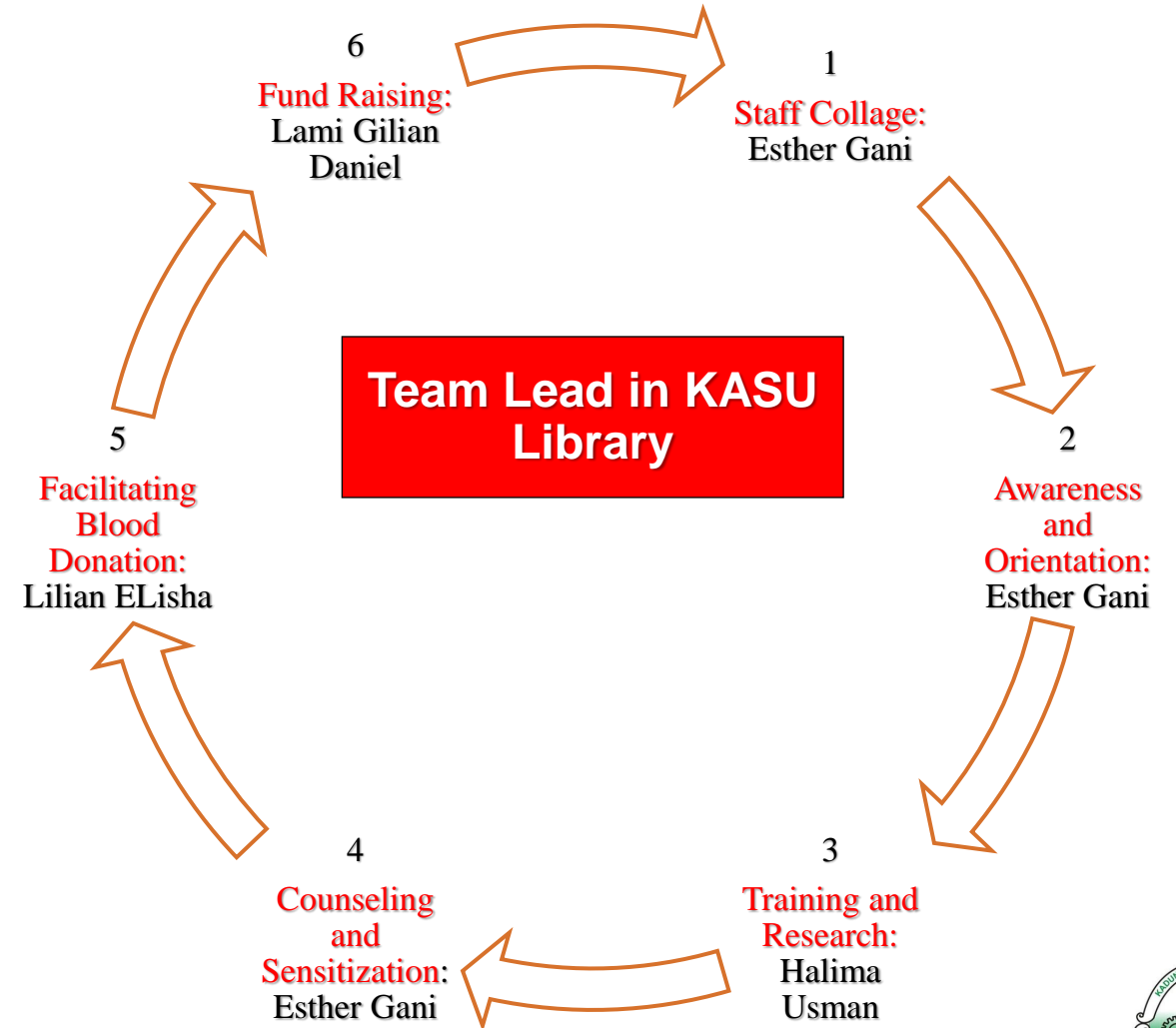
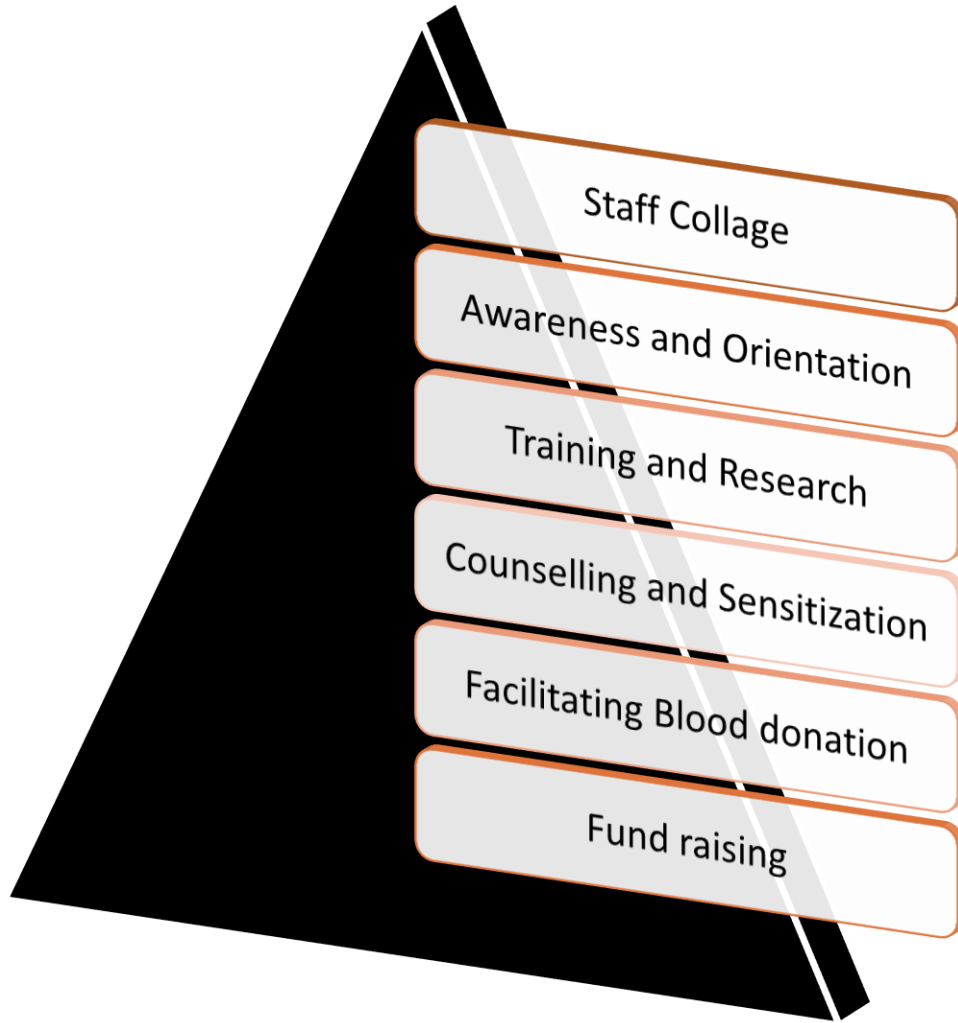
5 Webinars



Project Description: Work Packages



Role of KASU Library

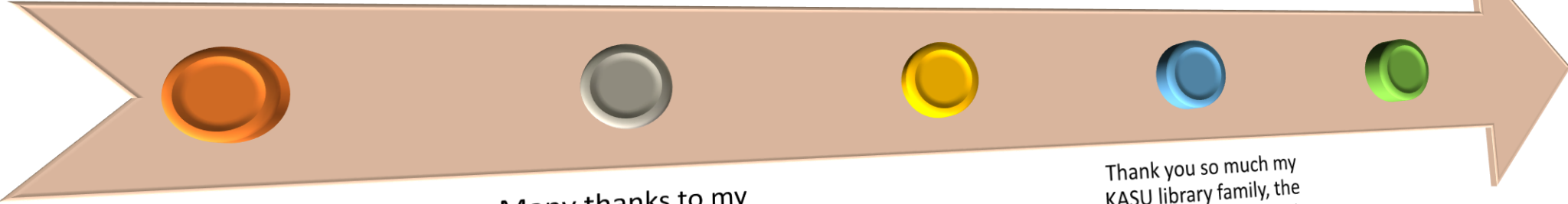


Appreciation

the Arise Project Management; Fedele (Duccio) Bonifazi, Baba Inusa, and project officials in Italy and UK

My profound appreciation to the Vice Chancellor of KASU; Prof. Abdullahi I Musa

KASU Library team, I appreciate you



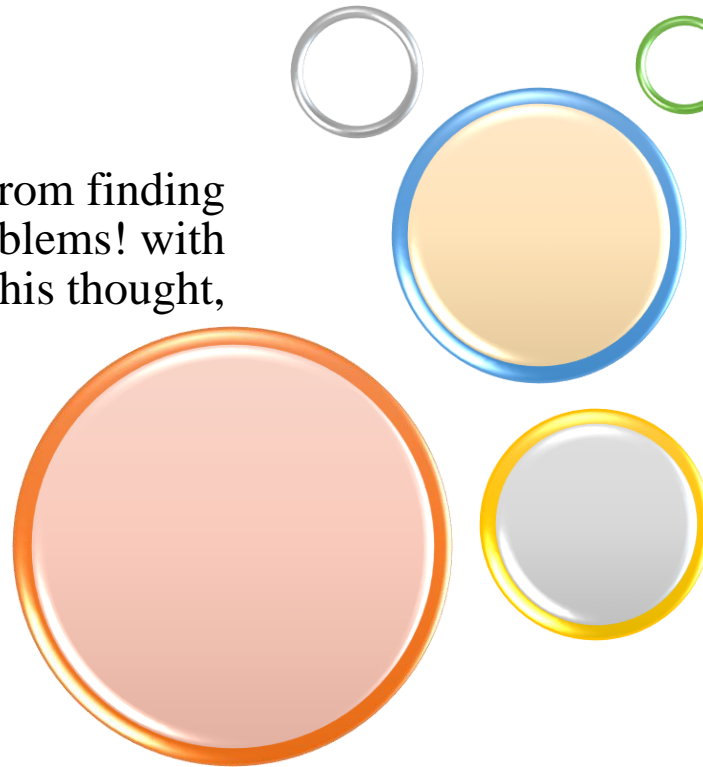
Many thanks to my Team lead and members in Kaduna (BDTH, PANAF, KSHA, and my Community Volunteers)

Thank you so much my KASU library family, the Dr. Babangida Dangani (UL), Dr. Hadiza Talatu Mohd. (DUL), Dr. Joshua Magoi (DUL) and all my precious colleagues



THANK YOU FOR YOUR TIME

Victory comes from finding opportunities in problems! with this thought,



Esther Gani

my philosophy in life is to identify a nagging problem in society and offer realistic solutions through communication and the implementation of science.

